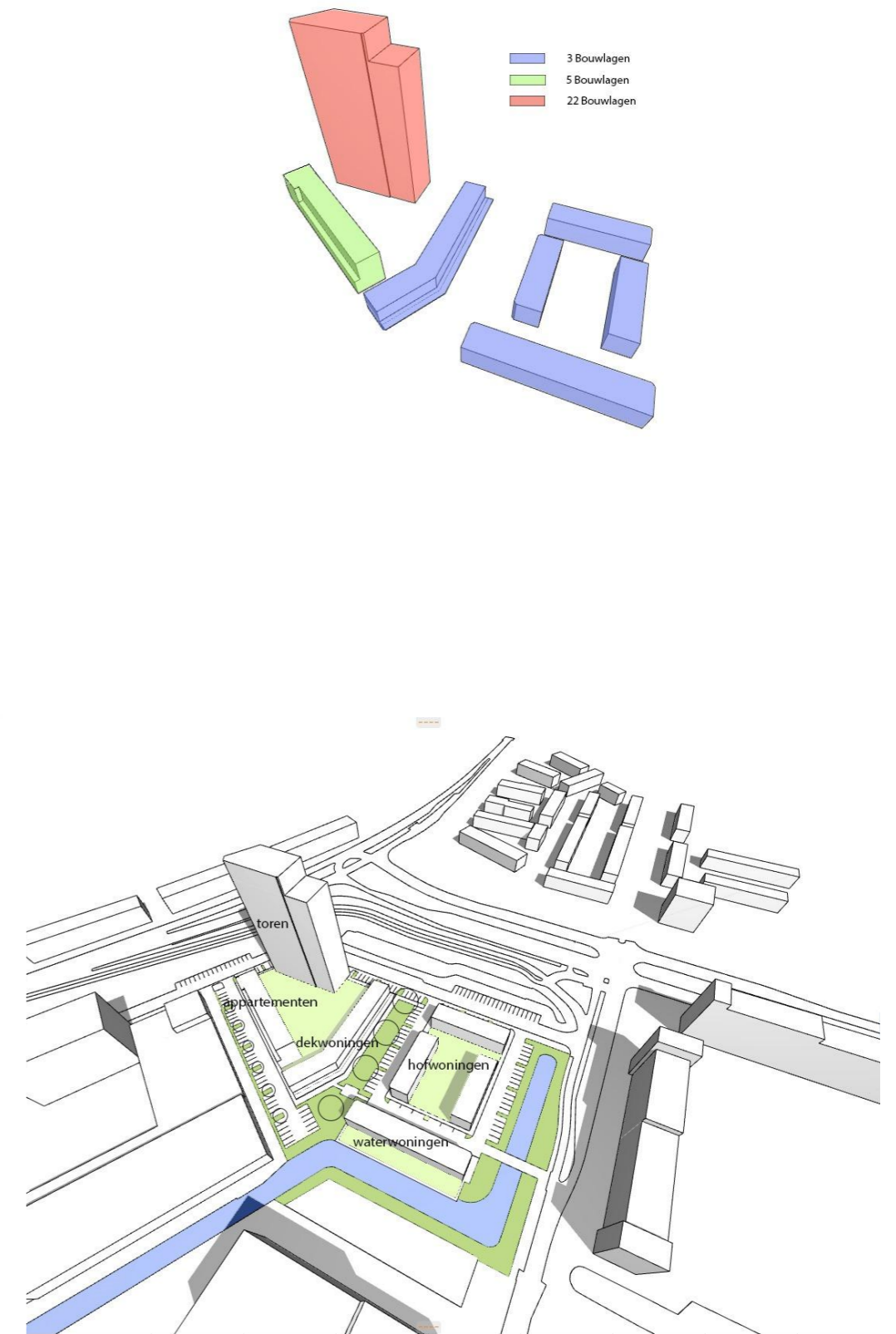
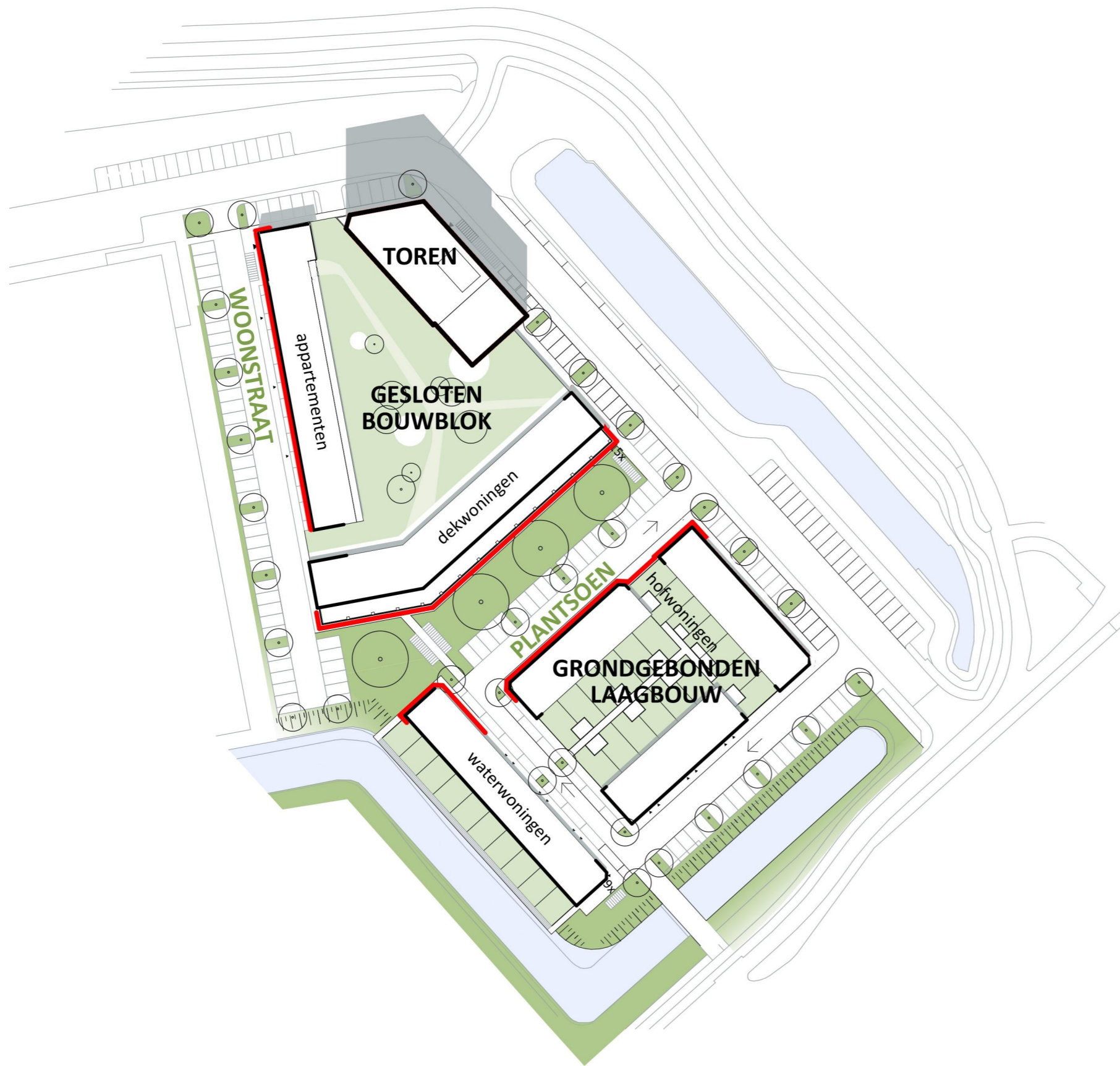
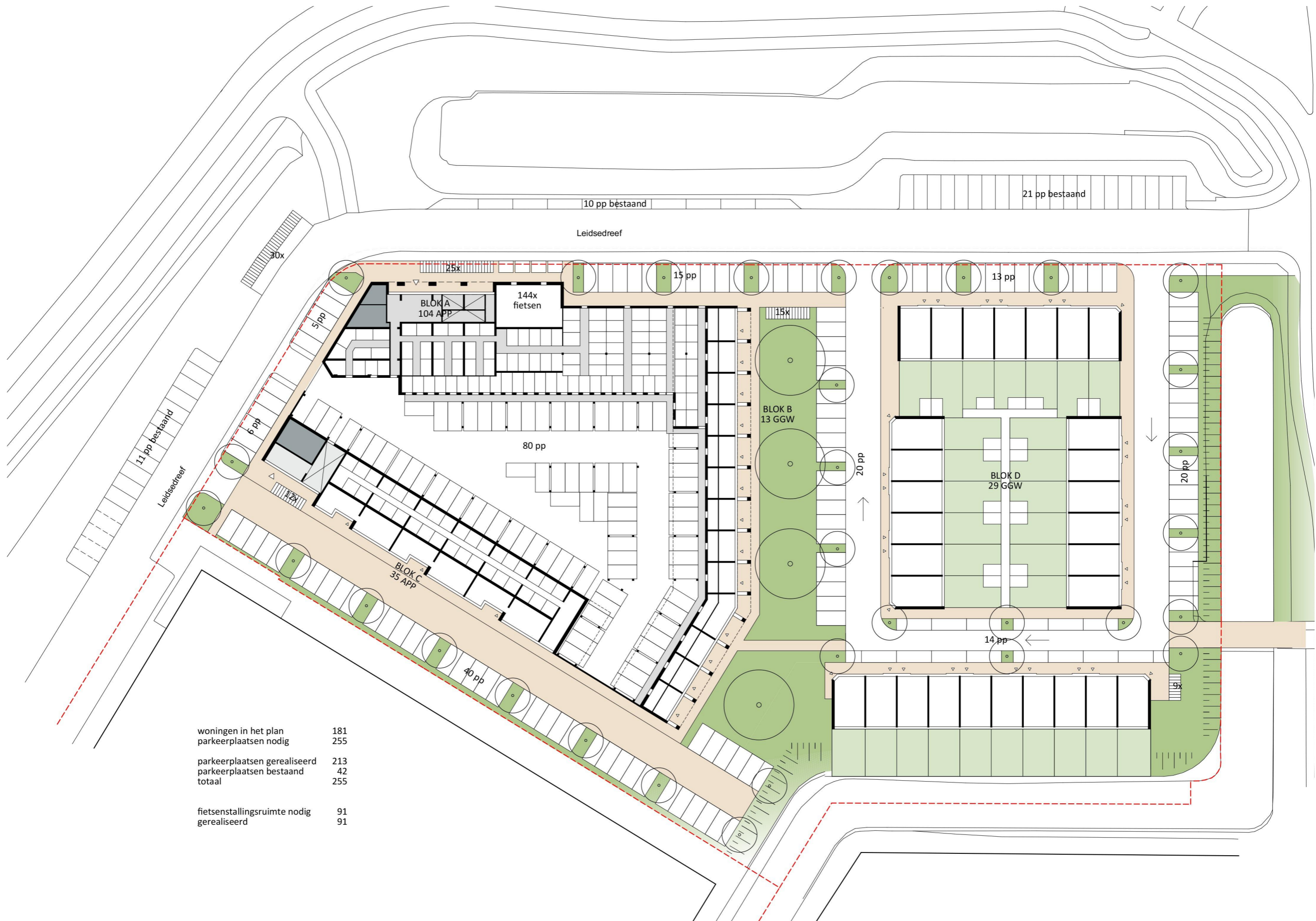


# Bijlage tekeningen

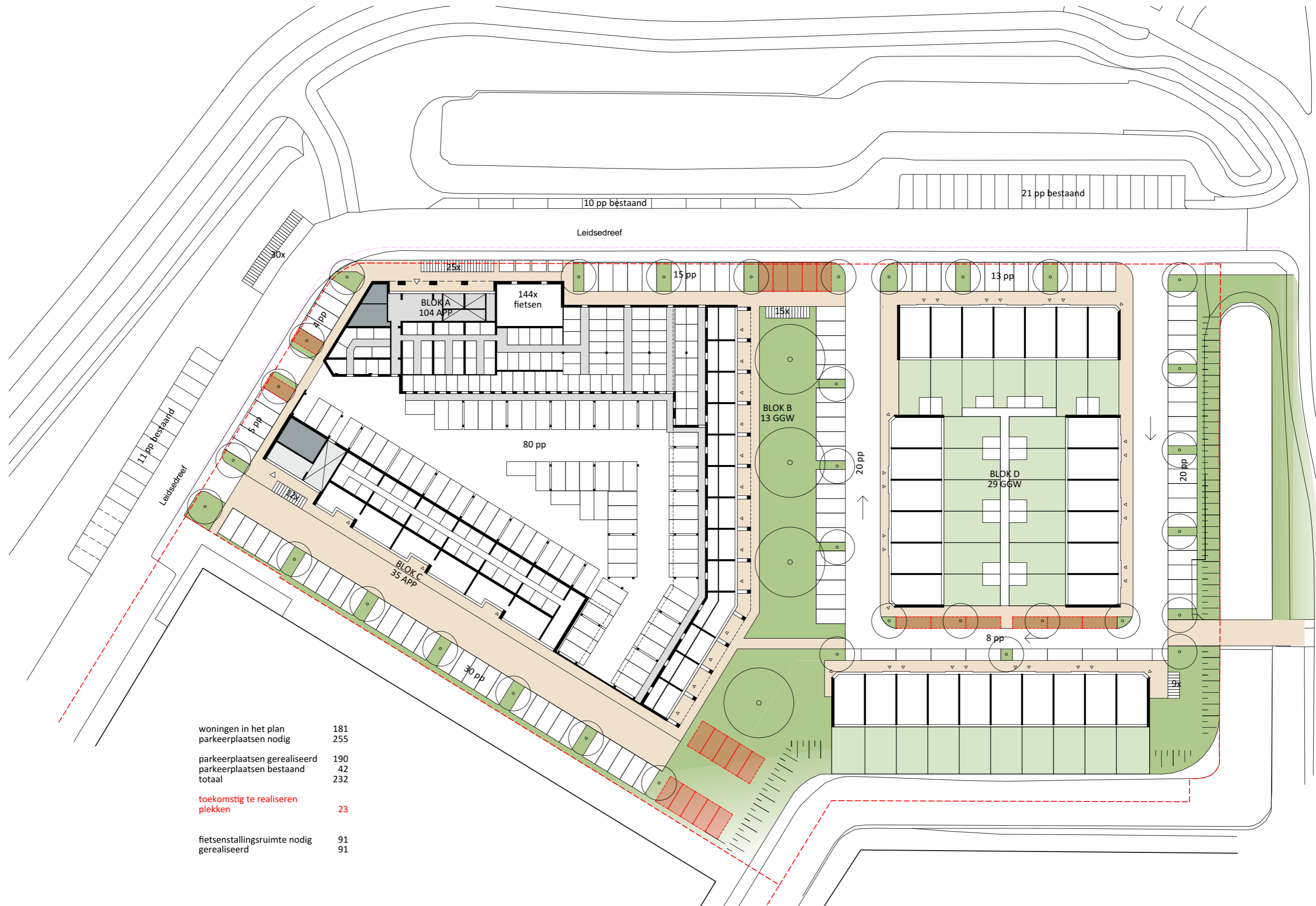
Leidsedreef 4-6 | Leiderdorp

---



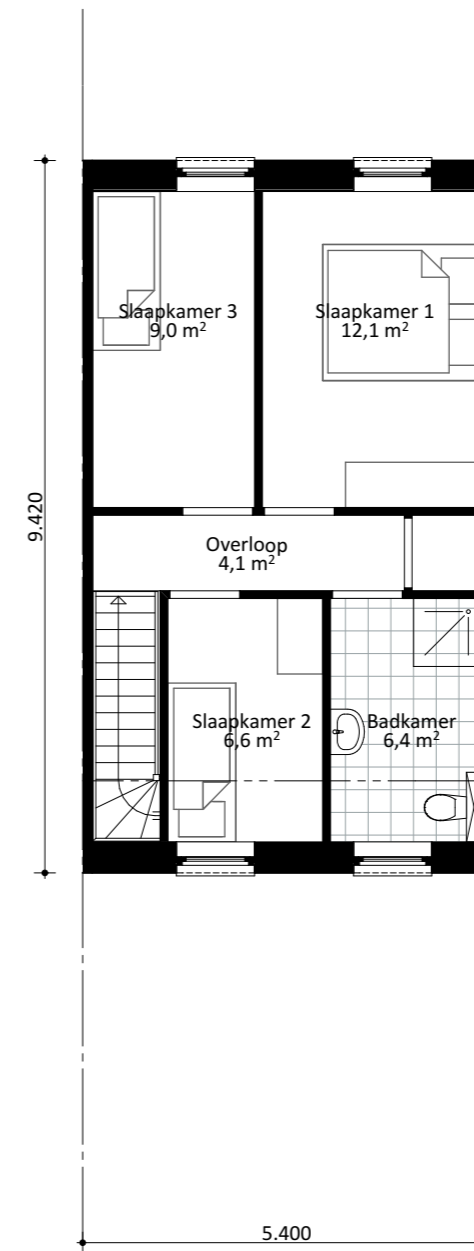
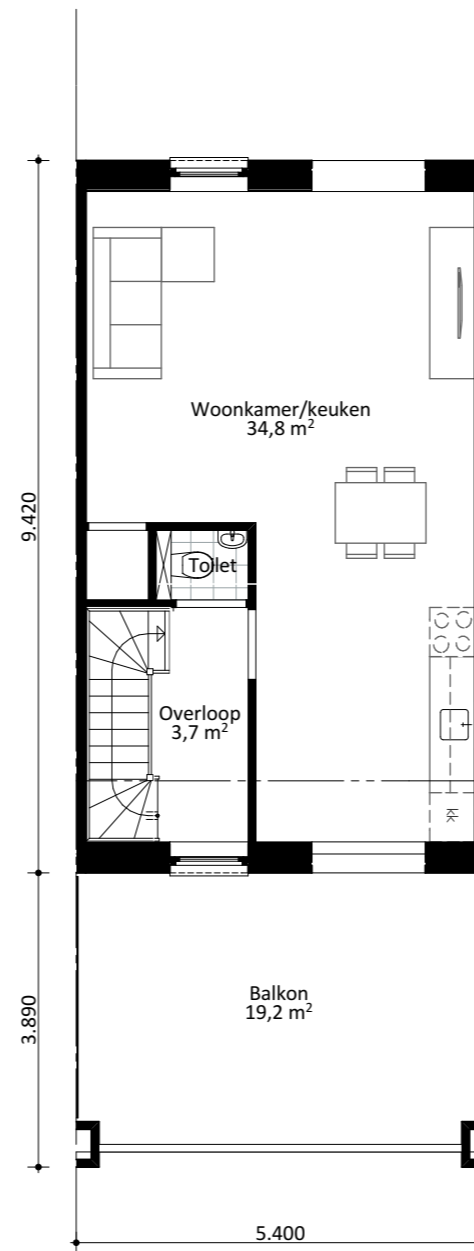
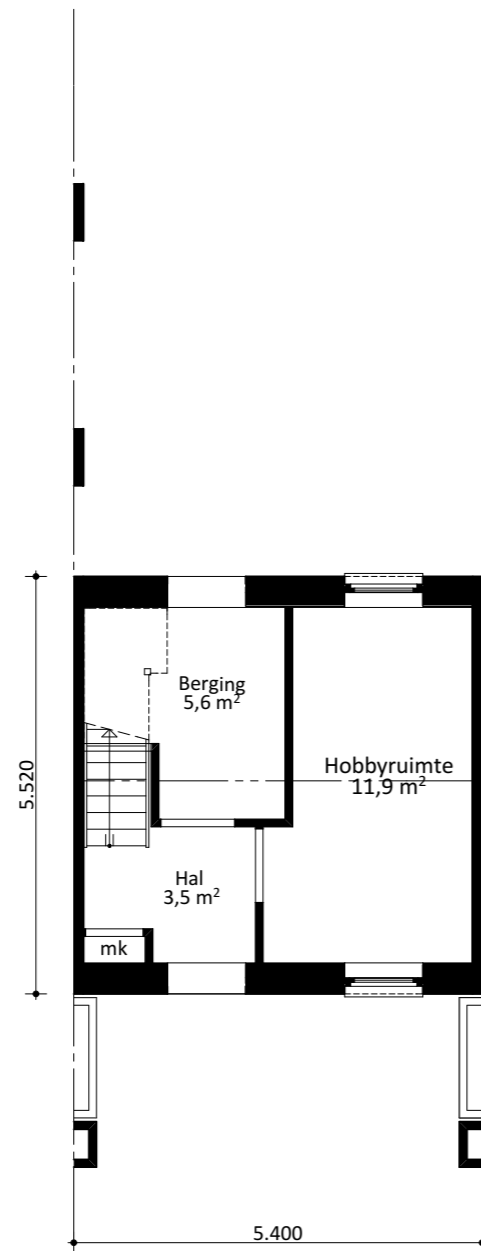


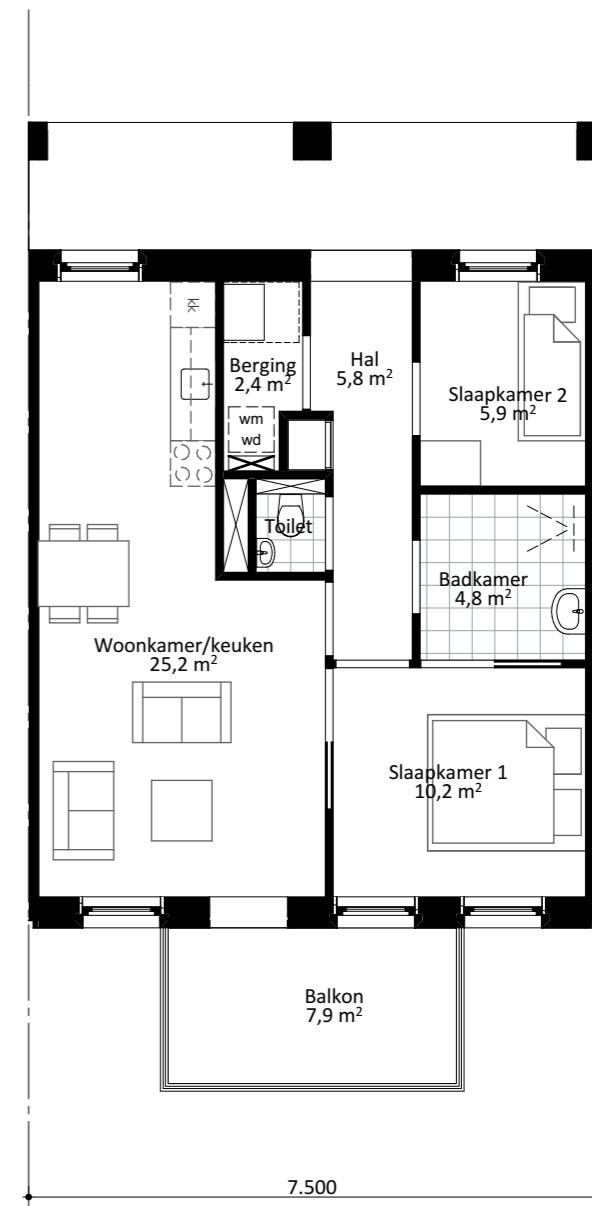
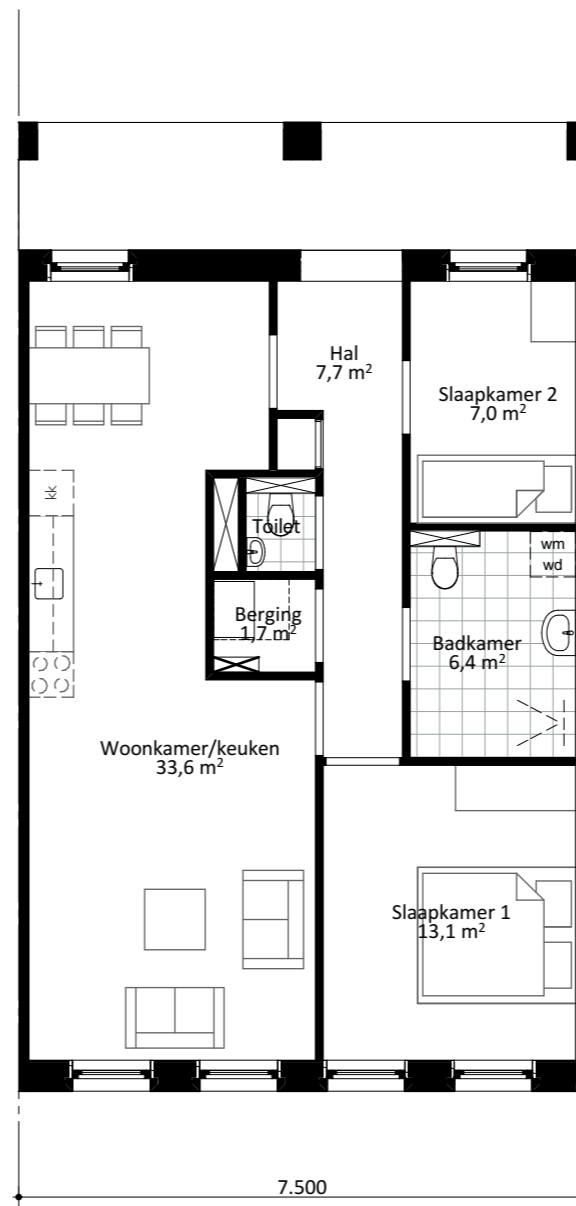
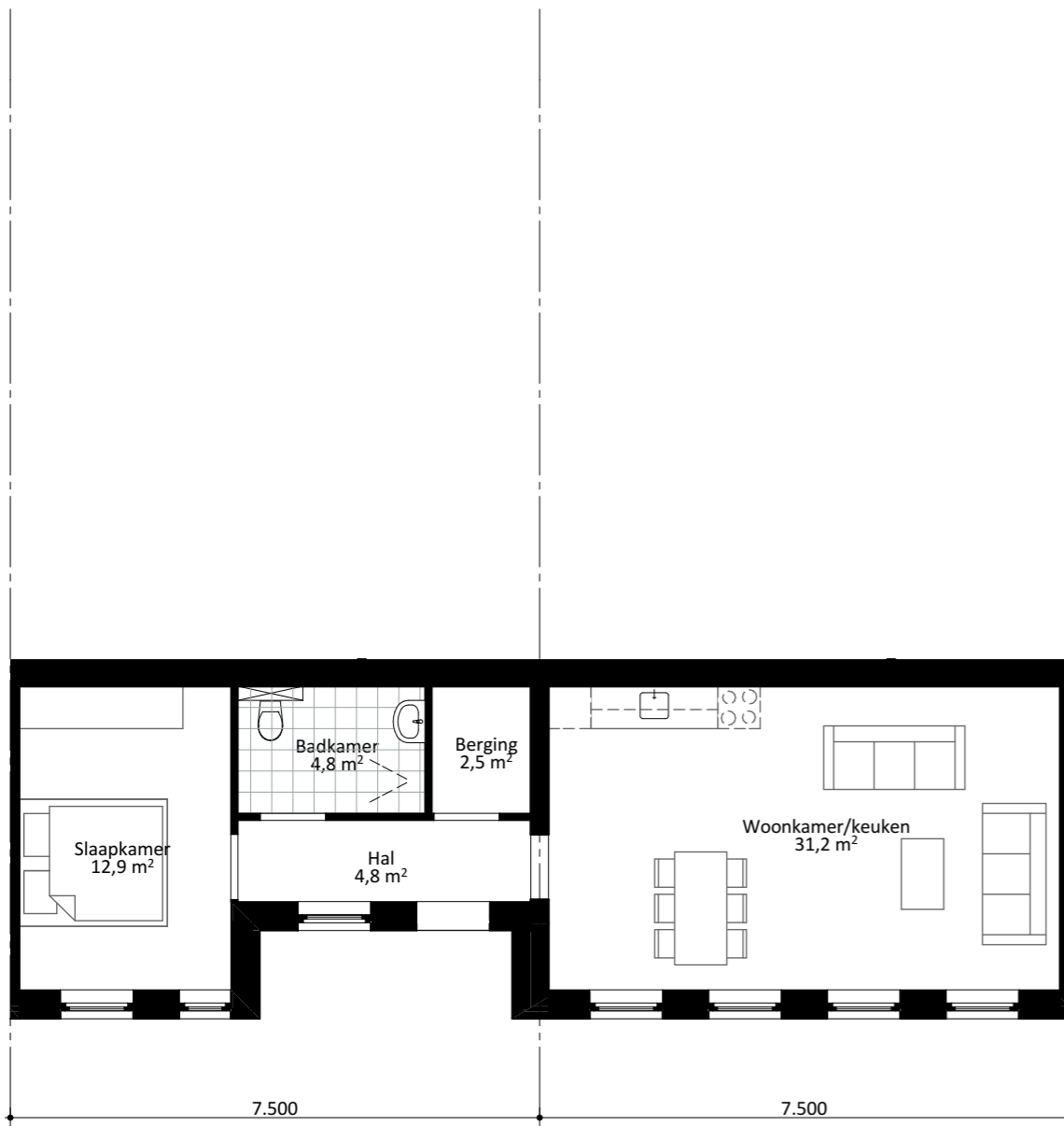
woningen in het plan	181
parkeerplaatsen nodig	255
parkeerplaatsen gerealiseerd	213
parkeerplaatsen bestaand	42
<b>totaal</b>	<b>255</b>
fietsenstallingsruimte nodig	91
gerealiseerd	91



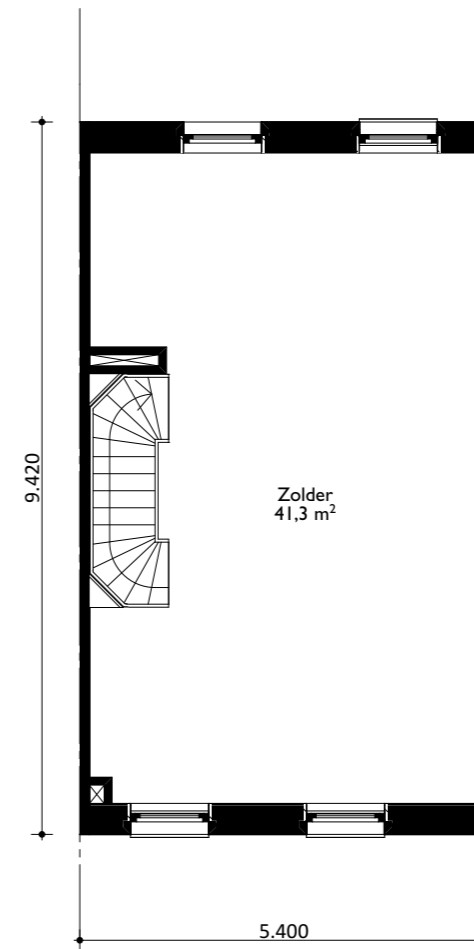
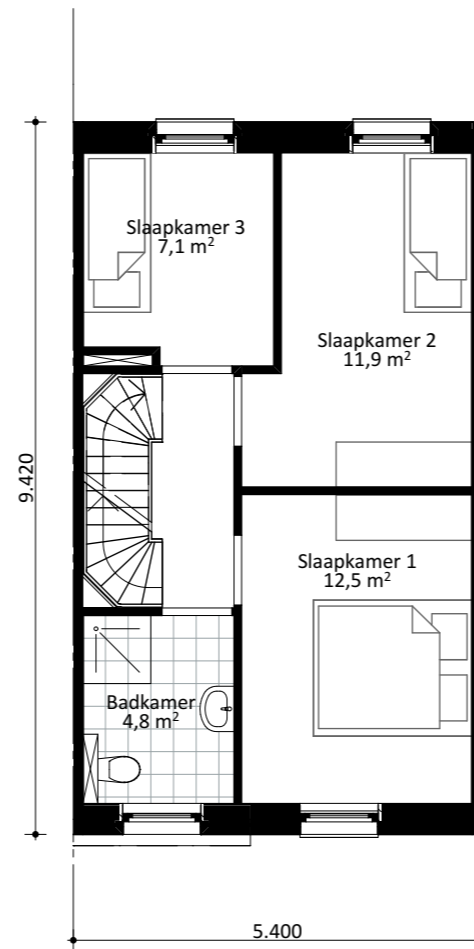
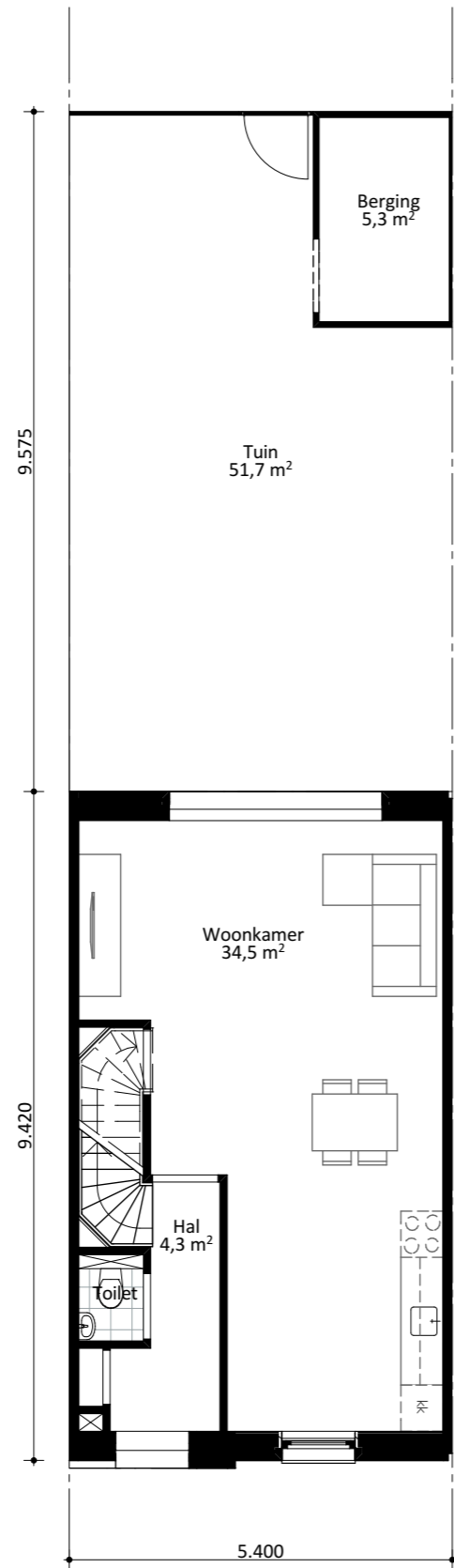


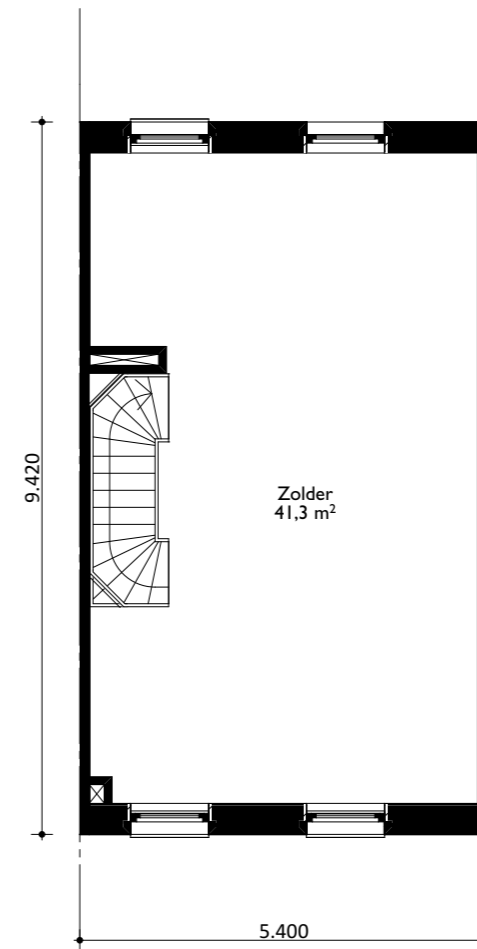
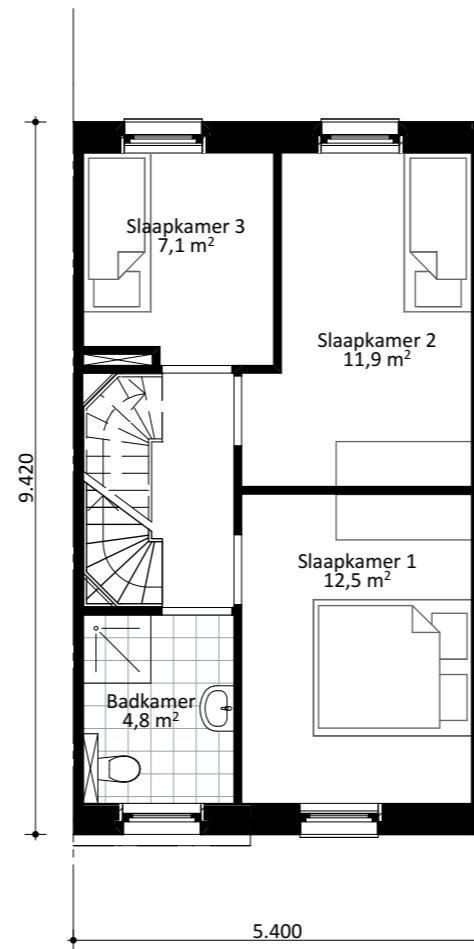
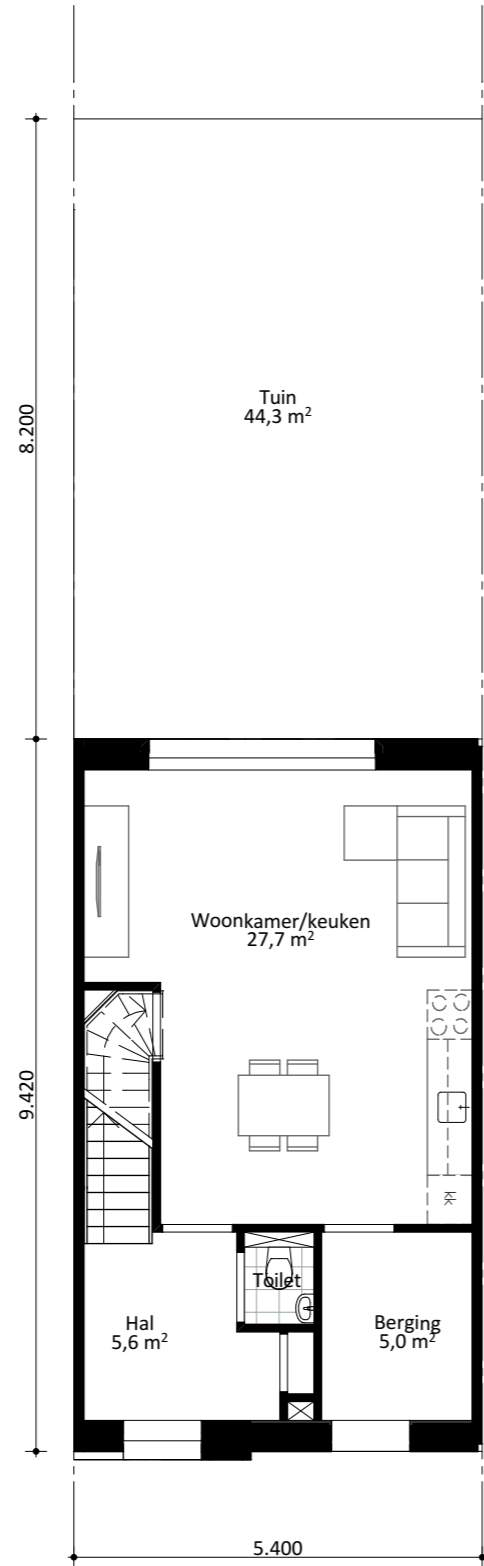


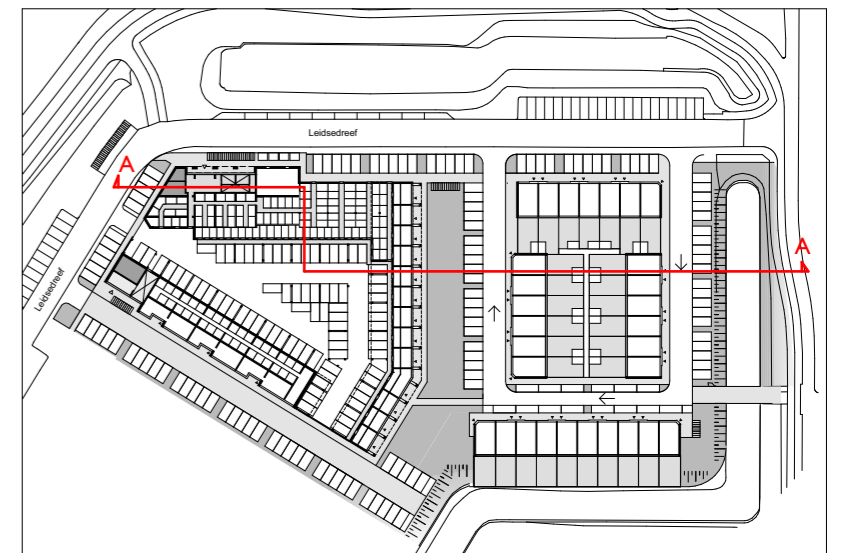
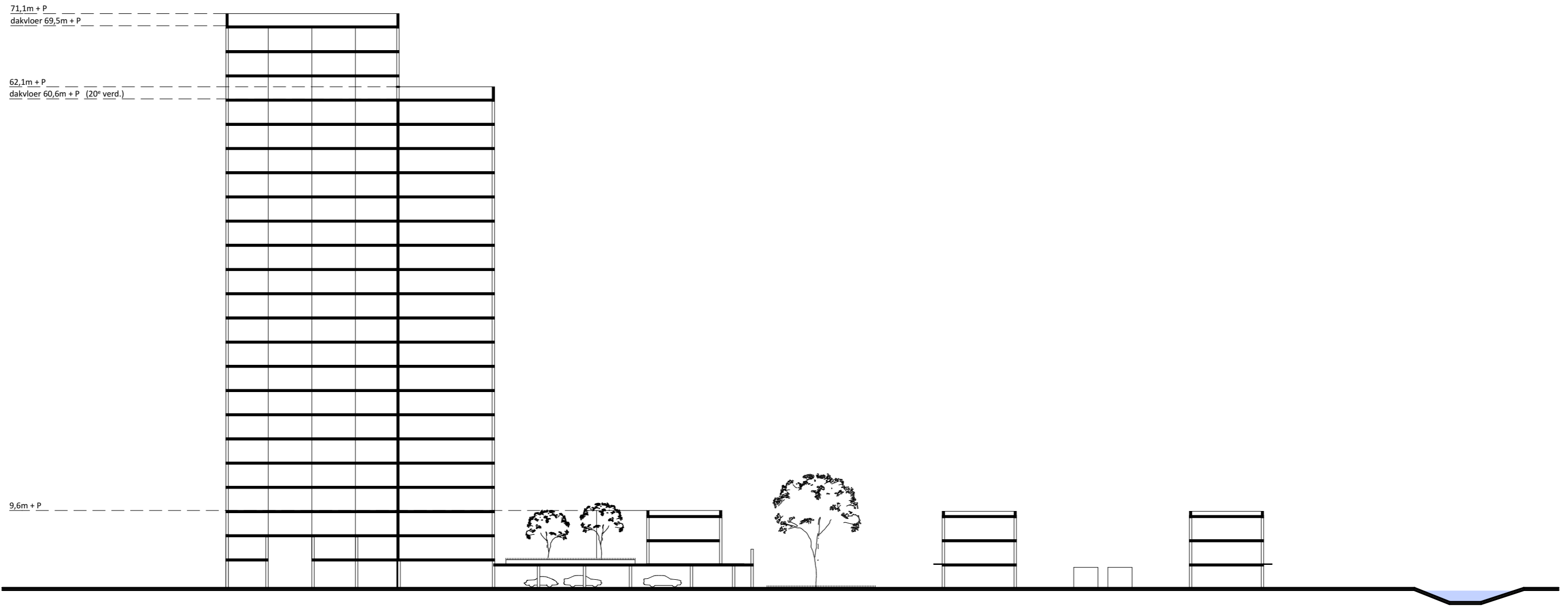


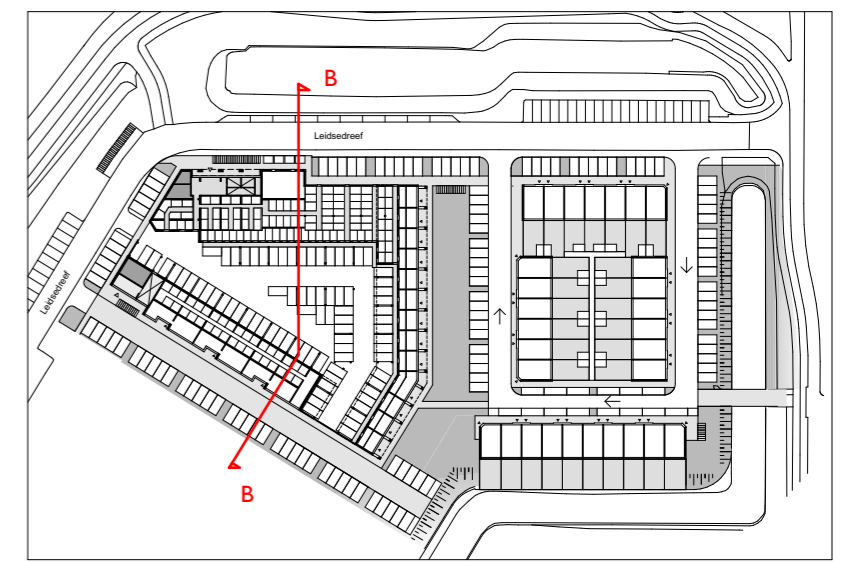
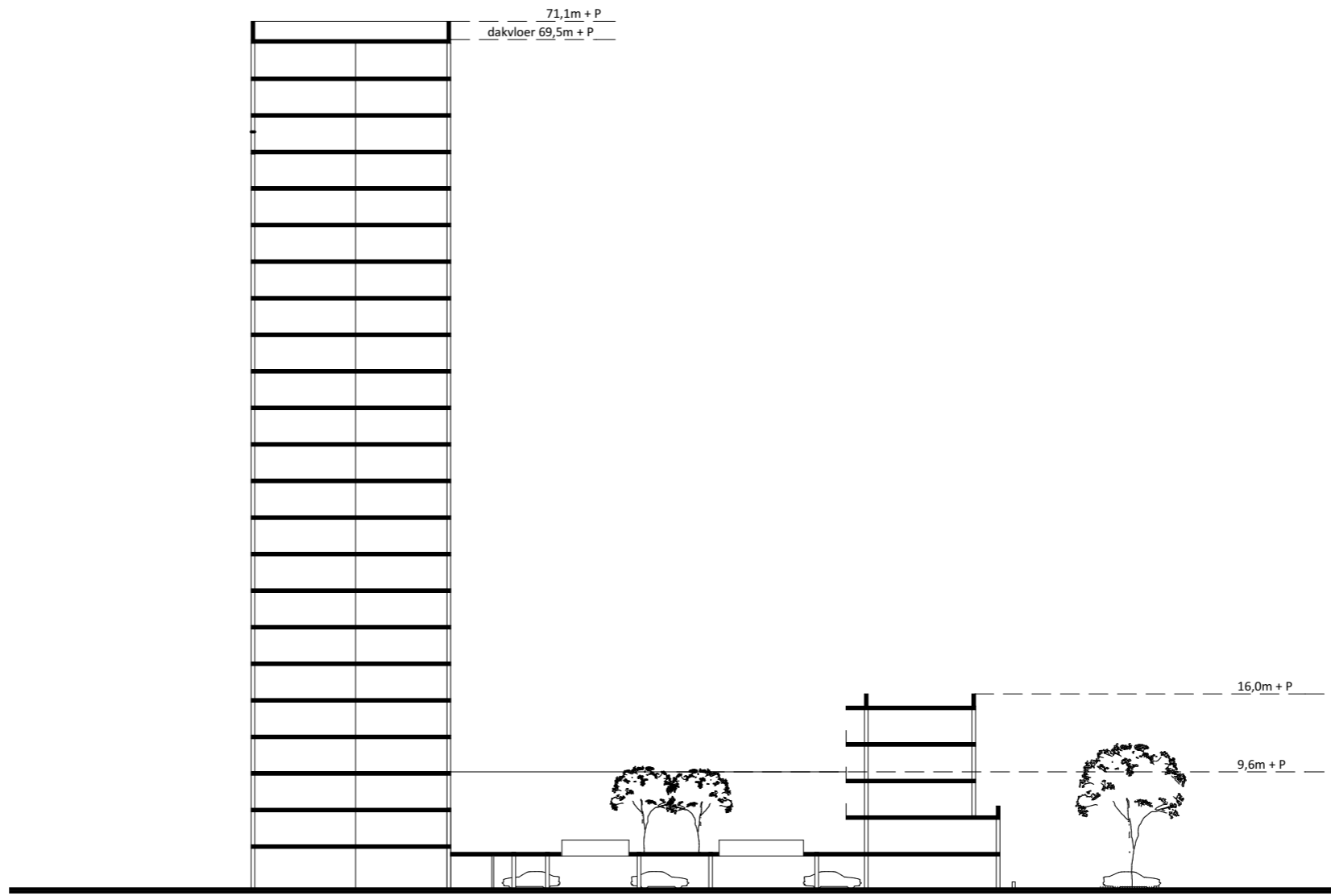












# gegevens Leidsedreef 4-6

---

opdrachtgever  
Engelendaal

constructeur  
Pieters Bouwtechniek

installatieadviseur  
Fore Installatie Adviseurs

bouwfysica en brandadvies  
Blonk Advies

projectteam KAW

Mathieu Kastelijn | architect, projectmanager  
06 546 614 01  
m.kastelijn@kaw.nl

**ondersteuning:**  
Joost van 't Klooster | projectmanager, onderzoeker duurzaamheid  
06 295 032 60  
j.vt.klooster@kaw.nl

Stijn Graat | Tekenaar  
088 529 0000  
s.graat@kaw.nl

KAW  
www.kaw.nl

Groningen  
Kattenhage 1  
Postbus 1527  
9701 BM Groningen  
Telefoon 088 529 000

Rotterdam  
Pelgrimsstraat 1  
3029 BH Rotterdam  
Telefoon 088 529 000

Eindhoven  
Rechtestraat 59c - 4<sup>e</sup> verd.  
5611 GN Eindhoven  
Telefoon 088 529 000

projectgegevens  
Leidsedreef 4-6 Leiderdorp



KAW is een bijzonder bureau. Onze ambitie is stedelijke, ruimtelijke en sociale vernieuwing vooruit helpen. Met mooie ontwerpen, goed onderzoek, werkzame adviezen, duurzame techniek en resultaatgericht projectmanagement. We werken vanuit Groningen, Rotterdam, Eindhoven en Barcelona. Meer informatie kunt u vinden op [www.kaw-e.nl](http://www.kaw-e.nl) en [www.kaw.nl](http://www.kaw.nl)

27 oktober 2016